



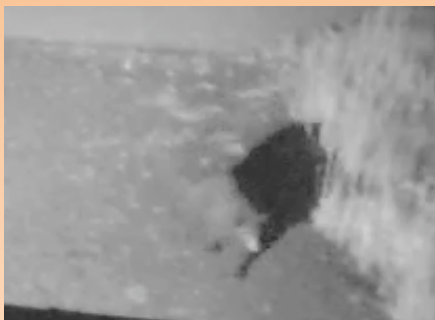
## Fall/Winter Is Here

The leaves fall off the trees pretty early at 9'500 feet, and there are not many left in Grandview Park. That means winter is just about here.



One of the things to keep in mind is bears. They are definitely around GVP with several sightings in the past months. Although we have never had any reported theft from unlocked (or locked) vehicles, there is now very good reason to lock your vehicles at night. A recent story that made the local news (9-News) illustrates this point. In its search for food prior to hibernation, a skilled bear was able to open a door and enter an unlocked vehicle. Apparently the bear hadn't mastered opening the door from the inside, and when it swung shut, the bear was trapped. He totally destroyed the interior of the car and managed to chew on the gearshift until the car went into neutral and rolled about 70 feet into a tree.

So a little advice, lock your car doors even in safe Grandview Park, especially during the fall season.



Bear sighting in GVP on September 1, 2016

## Snow Removal

We've already had a few small snowfalls which melt before the end of the day, but soon the snow will begin to pile up. The board recently approved a snow removal contract for the 2016-17 winter with Keith Everhart of Dirtworks. Please be sure not to park on the neighborhood streets for his heavy equipment requires a clear path to clear the roads of our neighborhood. If anyone would like to hire Dirtworks to clear their driveway, Keith can be reached at (970) 627-8020, or dirtworkservices@gmail.com.



## Skiers Prepare

The first Colorado Ski area (Arapahoe Basin) opened just last week. By the middle of November, others will follow suit including local favorites Winter Park and Granby Ranch. For our out-of-state neighbors, remember discounts are usually available in Denver and along the Front Range, so get your lift tickets before you come uphill. Historically, Front Range Safeway and King Soopers Grocery stores have had good discount tickets available. You can typically save 30-40% off of the window prices. Google online lift ticket deals to confirm discounts.



## Holiday Party

It's been a tradition for over ten years to have a holiday party sometime between Christmas and New Years. This year we are looking at Friday December 30<sup>th</sup>. We brainstormed a few ideas at the last Board meeting, but would be interested in input from the broader community. In any case, look for an announcement regarding this in the near future.



Visit the GVP Website:  
[gvp-hoa.com](http://gvp-hoa.com)

Join the Grandview Park Homeowners Association on Facebook!

## HOA \$ Dues

Reminder: Up until this year, HOA dues were due by the end of January. However, in an effort to align the dues with the HOA budget that is passed at our June Annual HOA Meeting, HOA dues will not be invoiced until the summer from now on.